



# INDOFINE Chemical Company, Inc.

121 Stryker Lane, Bldg. 30, Suite 1 • Hillsborough, NJ 08844 • U.S.A.

Phone: (908) 359-6778 • FAX: (908) 359-1179

website: [www.indofinechemical.com](http://www.indofinechemical.com)

e-mail: [chemical@indofinechemical.com](mailto:chemical@indofinechemical.com)

## CERTIFICATE OF ANALYSIS

Catalog number: 021235S

Product name: **ISOVITEXIN WITH HPLC**  
(6-Glucosylapigenin; Avroside; Homovitexin; Saponaretin)

Cas Number: [38953-85-4]

Lot Number: 2305805

Chemical Formula: C<sub>21</sub>H<sub>20</sub>O<sub>10</sub>

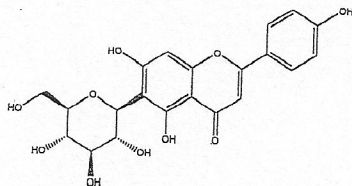
Molecular Weight: 432.38

Appearance: Yellow powder

Water Content: 2.1%

Storage: Store in cool, dry place. Protect from light.  
Keep package airproofed when not in use.

Purity(HPLC): 98.6%



Prepared by:  
*Ramesh Mandadi*  
Ramesh Mandadi  
Director of Operations

Reviewed and Approved by:  
*Sujata Moton*  
Sujata Moton  
VP



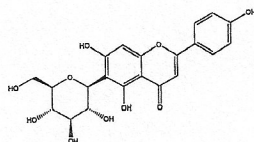
# INDOFINE Chemical Company, Inc.

121 Stryker Lane, Bldg. 30, Suite 1 • Hillsborough, NJ 08844 • U.S.A.

Phone: (908) 359-6778 • FAX: (908) 359-1179

website: [www.indofinechemical.com](http://www.indofinechemical.com)

e-mail: [chemical@indofinechemical.com](mailto:chemical@indofinechemical.com)



## HPLC ANALYSIS

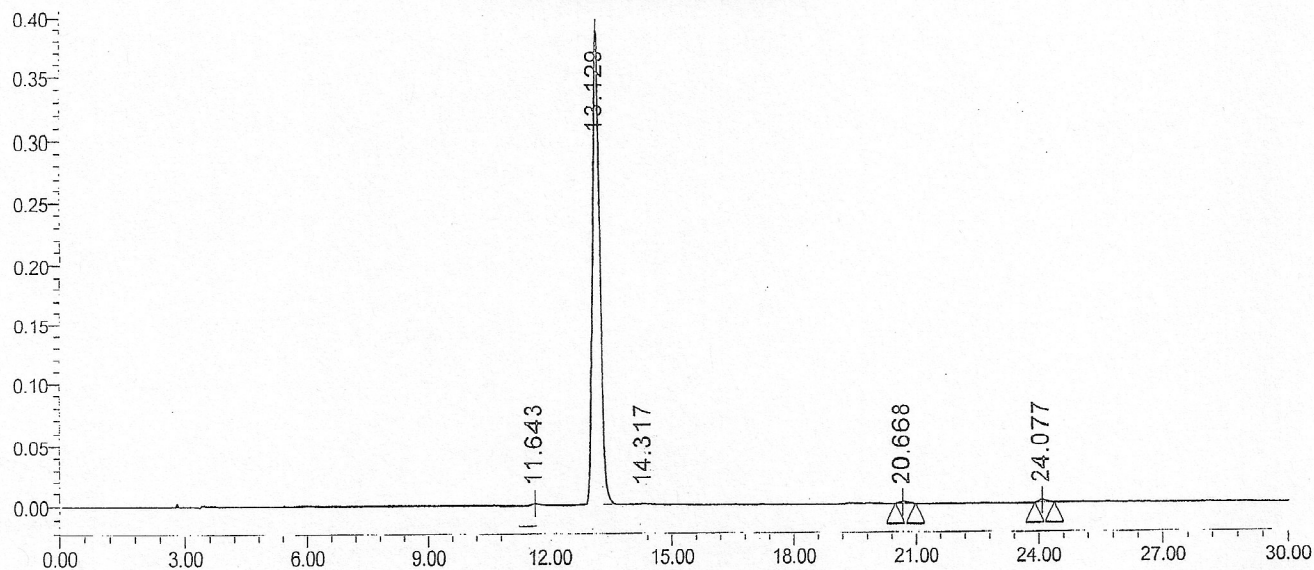
Catalog No.: 021235S  
Product Name: Isovitexin  
Lot No.: 2305805

### SAMPLE INFORMATION

Sample Name: Isovitexin  
Sample Type:  
Vial: 17  
Injection #: 1  
Injection Volume: 5.00 ul  
Run Time: 30.0 Minutes

Acquired By:  
Sample Set Name  
Acq. Method Set: Isovitexin  
Processing Method: sample

Auto-Scaled Chromatogram



Peak Results

|   | RT     | Area    | % Area | Height | Plate Count | Resolution |
|---|--------|---------|--------|--------|-------------|------------|
| 1 | 11.643 | 17026   | 0.34   | 1399   | 19283.25    |            |
| 2 | 13.129 | 4879387 | 98.63  | 388505 | 24436.49    | 4.45       |
| 3 | 14.317 | 9729    | 0.20   | 769    | 30034.06    | 3.35       |
| 4 | 20.668 | 15072   | 0.30   | 1125   | 44396.37    | 16.64      |
| 5 | 24.077 | 25943   | 0.52   | 2109   | 89086.34    | 9.25       |